

EVACUATION DIAGRAM

first 5 minutes
Experience makes all the difference.



Phone: 1300 321 120
Website: first5minutes.com.au

Issue Date: 13 June 2016
(Valid for a period of 5 years)

Diagrams used on this sign are NOT to scale.

RESPONSE TO AN EMERGENCY

R.A.C.E

Whilst emergencies differ, the RACE procedure offers a set of immediate, generic responses which are easily memorised and appropriate in most circumstances. They are:

- R REMOVE** If safe to do so, remove or rescue any persons in immediate danger.
- A ALERT** Notify appropriate personnel or combating authority. This usually involves calling the Emergency Number and operating the nearest fire alarm.
- C CONTAIN / CONTROL** Close doors, and if safe to do so, deal with the threat.
- E EVACUATE / EXTINGUISH** Remove all other persons from danger. Evacuate to the Assembly Area and remain there until advised otherwise by the Chief Warden.



STAGES OF EVACUATION

Evacuation should be conducted in three distinct stages depending on the severity of the incident.

STAGE 1 - REMOVAL OF PERSONS FROM THE IMMEDIATE DANGER AREA

Occupants are removed from the affected compartment into the next compartment, eg from a room into a corridor. Doors should be closed to confine smoke and fire in the affected compartment.

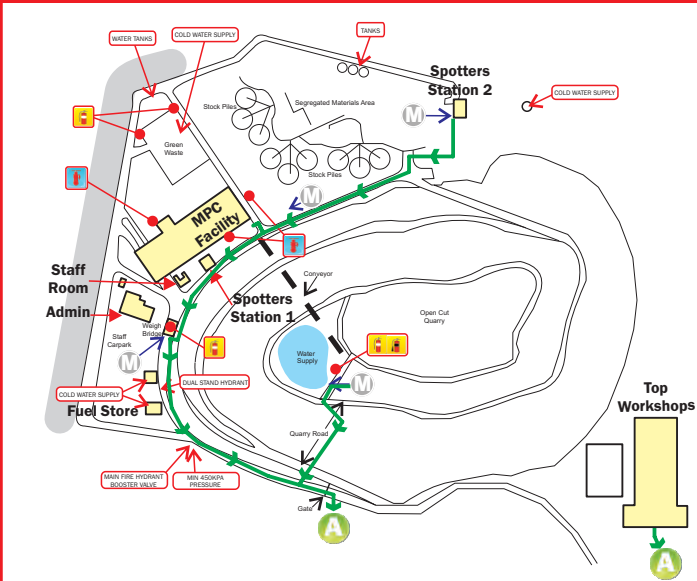
STAGE 2 - REMOVAL TO A SAFE AREA

If the severity of smoke or heat warrants further evacuation, occupants and visitors should be moved to safe areas on the same level.

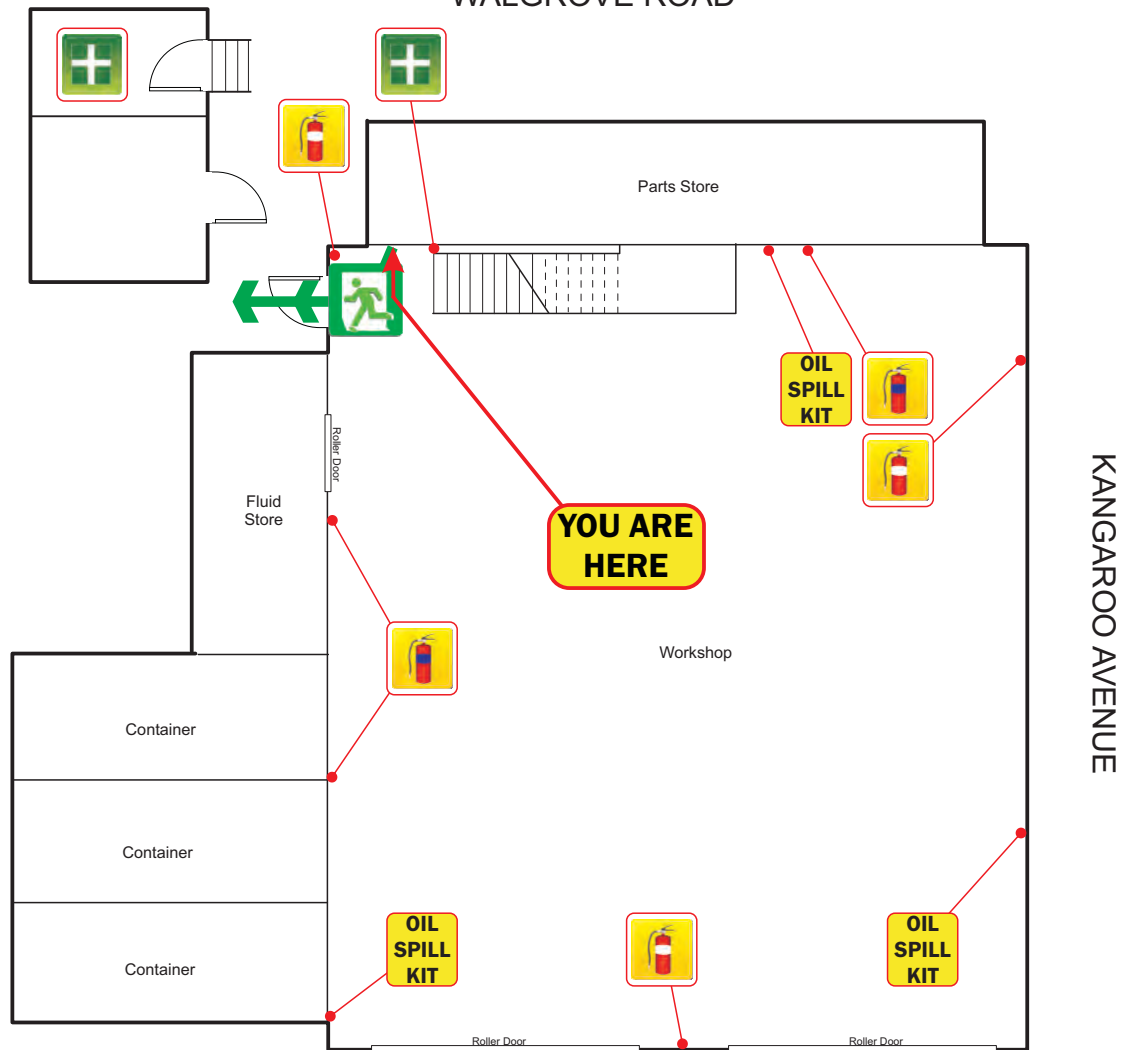
STAGE 3 - COMPLETE EVACUATION OF THE FLOOR

Should the emergency necessitate evacuation of the affected floor, Wardens are to direct occupants to the assembly area via the emergency exits.

ASSEMBLY AREA



WALGROVE ROAD



KANGAROO AVENUE

GROUND FLOOR

WORKSHOP BUILDING - DIAL-A-DUMP, HONEYCOMBE DRIVE, EASTERN CREEK, NSW 2766



FIRST AID KIT



CARBON DIOXIDE FIRE EXTINGUISHER



FOAM FIRE EXTINGUISHER



DRY CHEMICAL POWDER FIRE EXTINGUISHER



ASSEMBLY AREA



MUSTER POINT



EMERGENCY EXIT



EXIT ROUTE

EVACUATION DIAGRAM

first 5 minutes
Experience makes all the difference.



Phone: 1300 321 120
Website: first5minutes.com.au

Issue Date: 13 June 2016
(Valid for a period of 5 years)

Diagrams used on this sign are NOT to scale.

RESPONSE TO AN EMERGENCY

R.A.C.E

Whilst emergencies differ, the RACE procedure offers a set of immediate, generic responses which are easily memorised and appropriate in most circumstances. They are:

- R REMOVE** If safe to do so, remove or rescue any persons in immediate danger.
- A ALERT** Notify appropriate personnel or combating authority. This usually involves calling the Emergency Number and operating the nearest fire alarm.
- C CONTAIN / CONTROL** Close doors, and if safe to do so, deal with the threat.
- E EVACUATE / EXTINGUISH** Remove all other persons from danger. Evacuate to the Assembly Area and remain there until advised otherwise by the Chief Warden.



STAGES OF EVACUATION

Evacuation should be conducted in three distinct stages depending on the severity of the incident.

STAGE 1 - REMOVAL OF PERSONS FROM THE IMMEDIATE DANGER AREA

Occupants are removed from the affected compartment into the next compartment, eg from a room into a corridor. Doors should be closed to confine smoke and fire in the affected compartment.

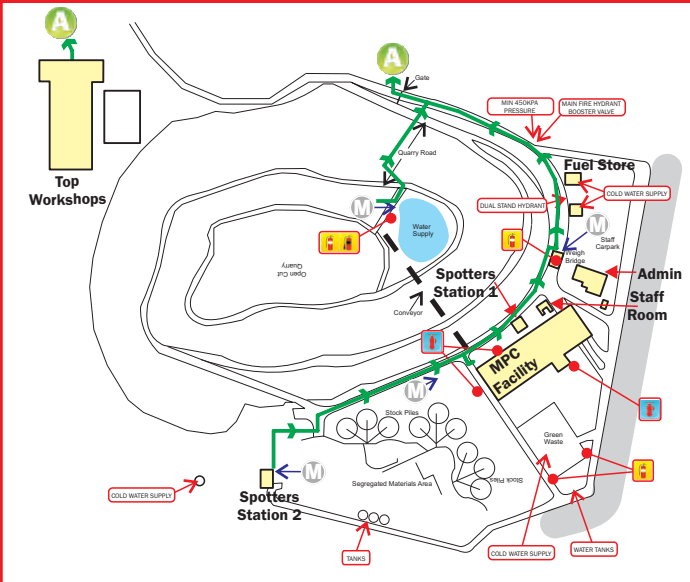
STAGE 2 - REMOVAL TO A SAFE AREA

If the severity of smoke or heat warrants further evacuation, occupants and visitors should be moved to safe areas on the same level.

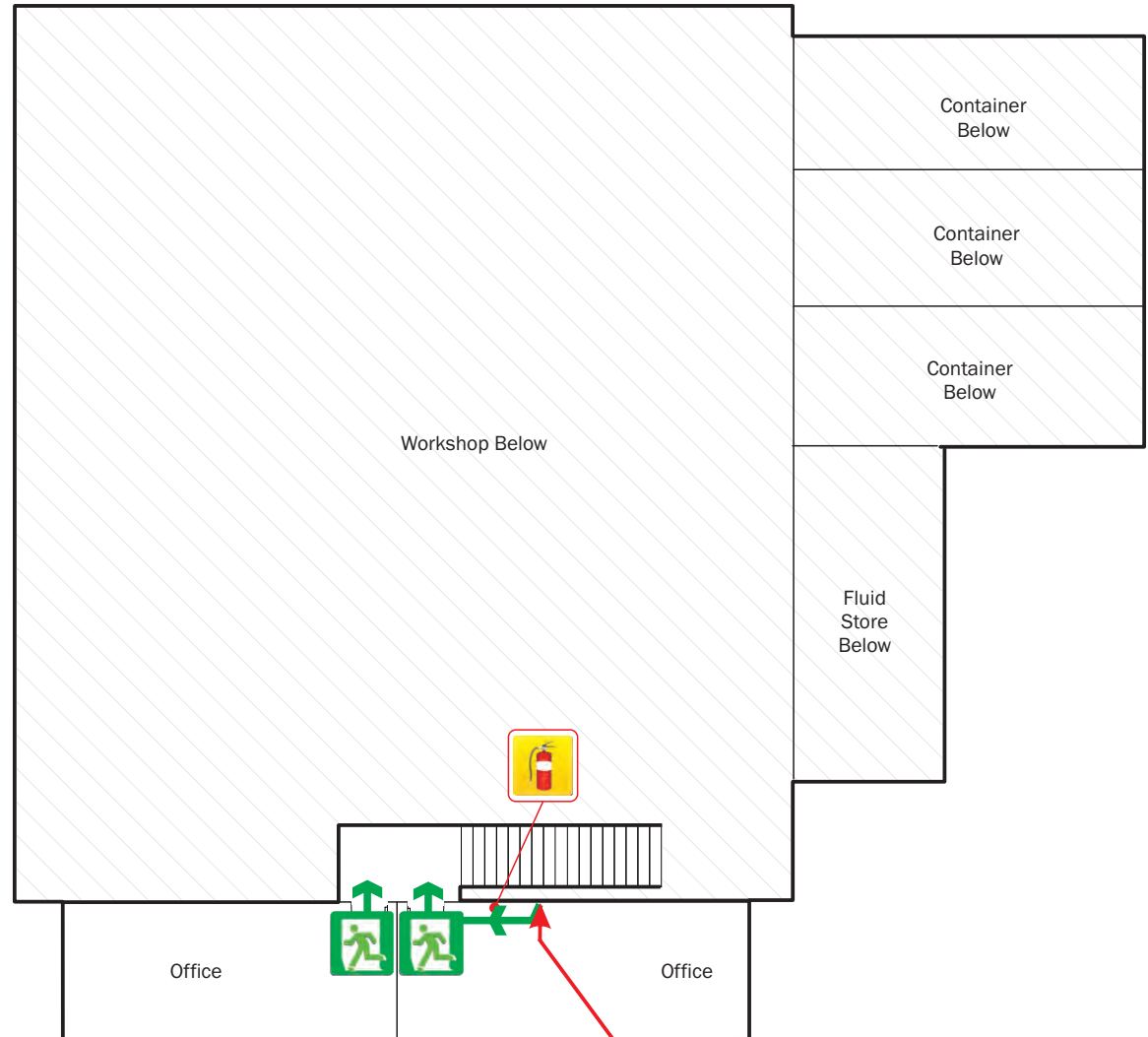
STAGE 3 - COMPLETE EVACUATION OF THE FLOOR

Should the emergency necessitate evacuation of the affected floor, Wardens are to direct occupants to the assembly area via the emergency exits.

ASSEMBLY AREA



KANGAROO AVENUE



LEVEL 1

WORKSHOP BUILDING - DIAL-A-DUMP, HONEYCOMBE DRIVE, EASTERN CREEK, NSW 2766



DRY CHEMICAL POWDER
FIRE EXTINGUISHER



ASSEMBLY
AREA



MUSTER
POINT



EMERGENCY
EXIT



EXIT
ROUTE

EVACUATION DIAGRAM

first 5 minutes
Experience makes all the difference.



Phone: 1300 321 120
Website: first5minutes.com.au

Issue Date: 13 June 2016
(Valid for a period of 5 years)

Diagrams used on this sign are NOT to scale.

RESPONSE TO AN EMERGENCY

R.A.C.E

Whilst emergencies differ, the RACE procedure offers a set of immediate, generic responses which are easily memorised and appropriate in most circumstances. They are:

- R REMOVE** If safe to do so, remove or rescue any persons in immediate danger.
- A ALERT** Notify appropriate personnel or combating authority. This usually involves calling the Emergency Number and operating the nearest fire alarm.
- C CONTAIN / CONTROL** Close doors, and if safe to do so, deal with the threat.
- E EVACUATE / EXTINGUISH** Remove all other persons from danger. Evacuate to the Assembly Area and remain there until advised otherwise by the Chief Warden.



STAGES OF EVACUATION

Evacuation should be conducted in three distinct stages depending on the severity of the incident.

STAGE 1 - REMOVAL OF PERSONS FROM THE IMMEDIATE DANGER AREA

Occupants are removed from the affected compartment into the next compartment, eg from a room into a corridor. Doors should be closed to confine smoke and fire in the affected compartment.

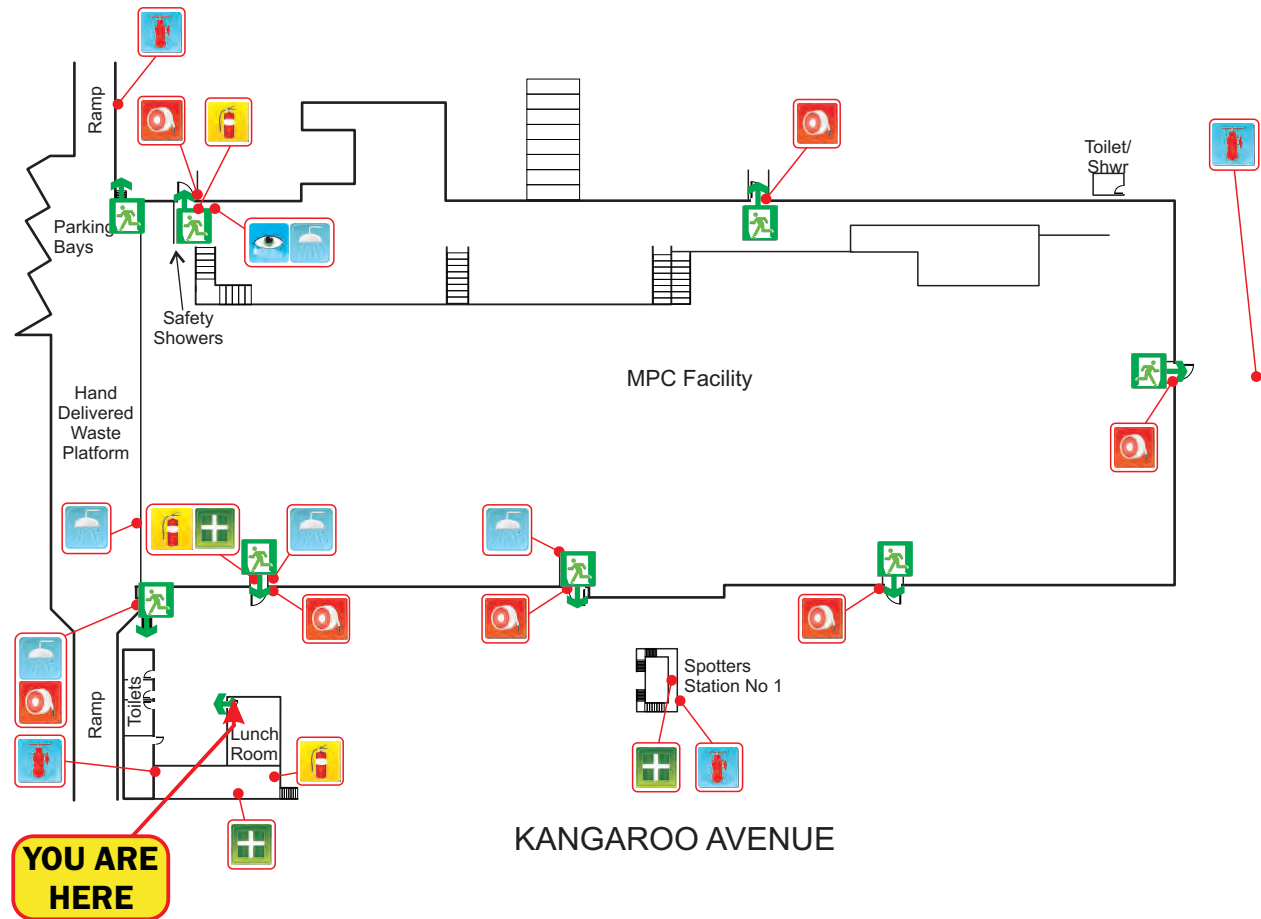
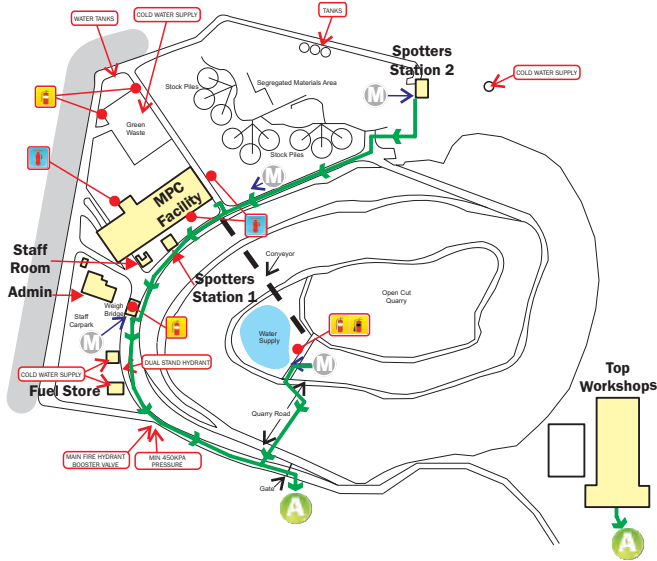
STAGE 2 - REMOVAL TO A SAFE AREA

If the severity of smoke or heat warrants further evacuation, occupants and visitors should be moved to safe areas on the same level.

STAGE 3 - COMPLETE EVACUATION OF THE FLOOR

Should the emergency necessitate evacuation of the affected floor, Wardens are to direct occupants to the assembly area via the emergency exits.

ASSEMBLY AREA



GROUND FLOOR

WORKSHOP BUILDING - DIAL-A-DUMP, HONEYCOMBE DRIVE, EASTERN CREEK, NSW 2766



FIRE HYDRANT



EYE WASH



EMERGENCY SHOWER



FIRE HOSE REEL



FIRST AID KIT



DRY CHEMICAL POWDER FIRE EXTINGUISHER



MUSTER POINT



ASSEMBLY AREA



EMERGENCY EXIT



EXIT ROUTE

EVACUATION DIAGRAM

first 5 minutes 
Experience makes all the difference.

Phone: 1300 321 120
Website: first5minutes.com.au

Issue Date: 13 June 2016
(Valid for a period of 5 years)

Diagrams used on this sign are NOT to scale.

RESPONSE TO AN EMERGENCY

R.A.C.E

Whilst emergencies differ, the RACE procedure offers a set of immediate, generic responses which are easily memorised and appropriate in most circumstances. They are:

- R REMOVE** If safe to do so, remove or rescue any persons in immediate danger.
- A ALERT** Notify appropriate personnel or combating authority. This usually involves calling the Emergency Number and operating the nearest fire alarm.
- C CONTAIN / CONTROL** Close doors, and if safe to do so, deal with the threat.
- E EVACUATE / EXTINGUISH** Remove all other persons from danger. Evacuate to the Assembly Area and remain there until advised otherwise by the Chief Warden.



STAGES OF EVACUATION

Evacuation should be conducted in three distinct stages depending on the severity of the incident.

STAGE 1 - REMOVAL OF PERSONS FROM THE IMMEDIATE DANGER AREA

Occupants are removed from the affected compartment into the next compartment, eg from a room into a corridor. Doors should be closed to confine smoke and fire in the affected compartment.

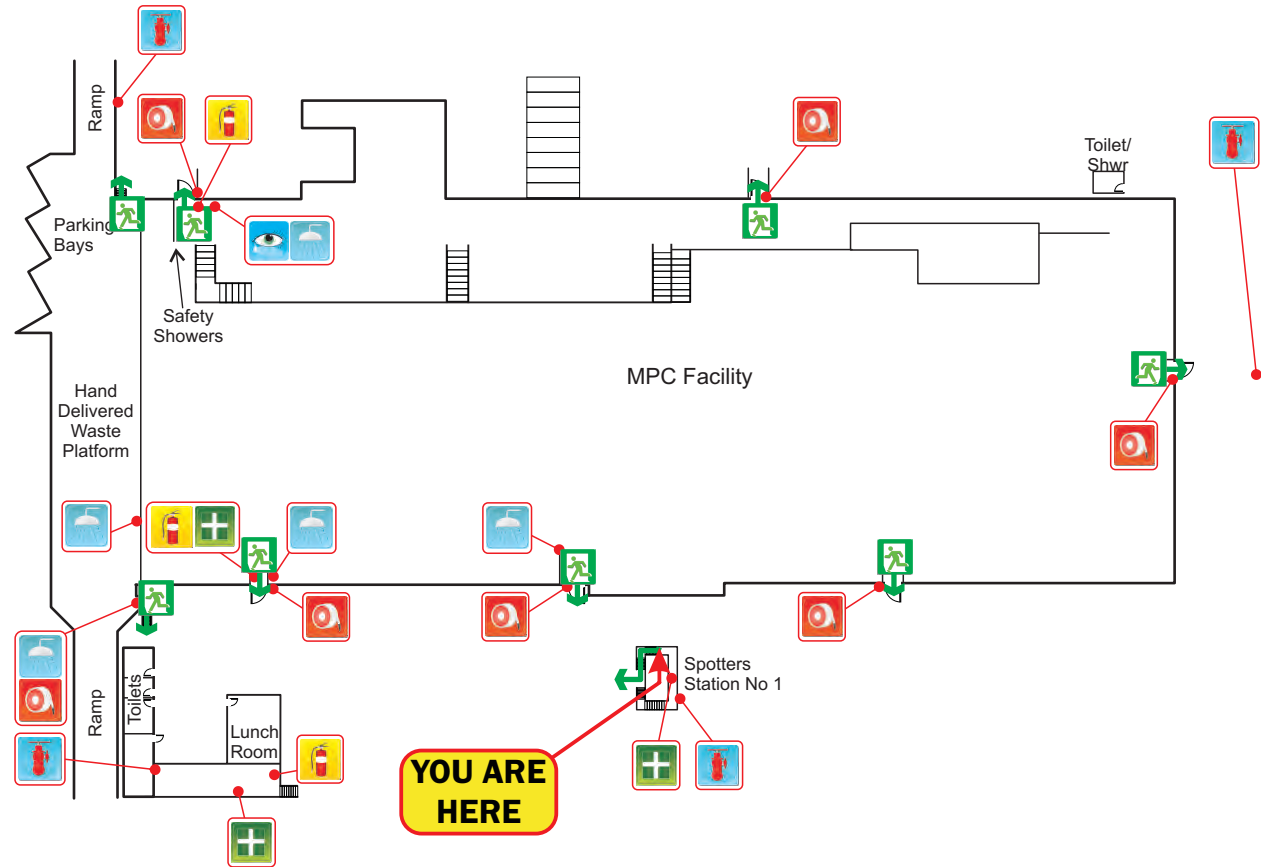
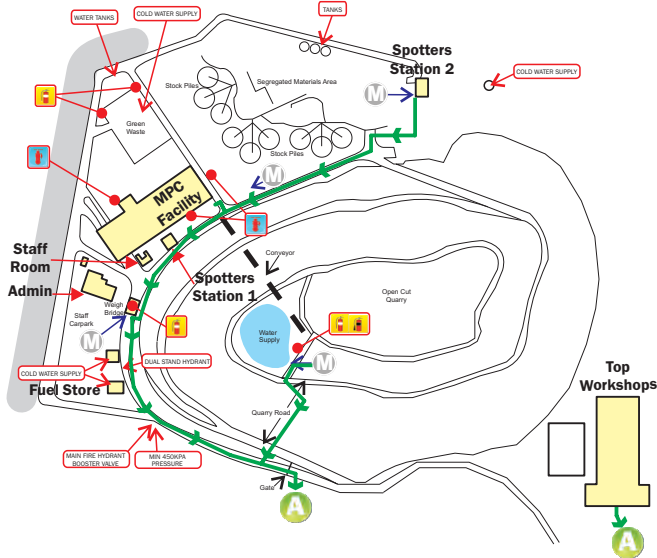
STAGE 2 - REMOVAL TO A SAFE AREA

If the severity of smoke or heat warrants further evacuation, occupants and visitors should be moved to safe areas on the same level.

STAGE 3 - COMPLETE EVACUATION OF THE FLOOR

Should the emergency necessitate evacuation of the affected floor, Wardens are to direct occupants to the assembly area via the emergency exits.

ASSEMBLY AREA



KANGAROO AVENUE

GROUND FLOOR

WORKSHOP BUILDING - DIAL-A-DUMP, HONEYCOMBE DRIVE, EASTERN CREEK, NSW 2766



EVACUATION DIAGRAM



first 5 minutes
Experience makes all the difference.

Phone: 1300 321 120
Website: first5minutes.com.au

Issue Date: 13 June 2016
(Valid for a period of 5 years)

Diagrams used on this sign are NOT to scale.

RESPONSE TO AN EMERGENCY

R.A.C.E

Whilst emergencies differ, the RACE procedure offers a set of immediate, generic responses which are easily memorised and appropriate in most circumstances. They are:

- R REMOVE** If safe to do so, remove or rescue any persons in immediate danger.
- A ALERT** Notify appropriate personnel or combating authority. This usually involves calling the Emergency Number and operating the nearest fire alarm.
- C CONTAIN / CONTROL** Close doors, and if safe to do so, deal with the threat.
- E EVACUATE / EXTINGUISH** Remove all other persons from danger. Evacuate to the Assembly Area and remain there until advised otherwise by the Chief Warden.



STAGES OF EVACUATION

Evacuation should be conducted in three distinct stages depending on the severity of the incident.

STAGE 1 - REMOVAL OF PERSONS FROM THE IMMEDIATE DANGER AREA

Occupants are removed from the affected compartment into the next compartment, eg from a room into a corridor. Doors should be closed to confine smoke and fire in the affected compartment.

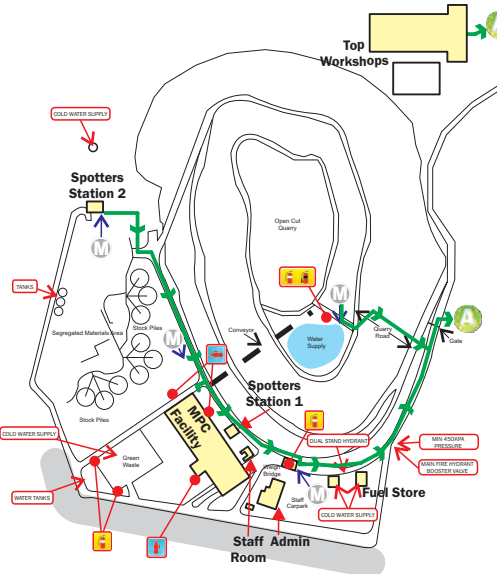
STAGE 2 - REMOVAL TO A SAFE AREA

If the severity of smoke or heat warrants further evacuation, occupants and visitors should be moved to safe areas on the same level.

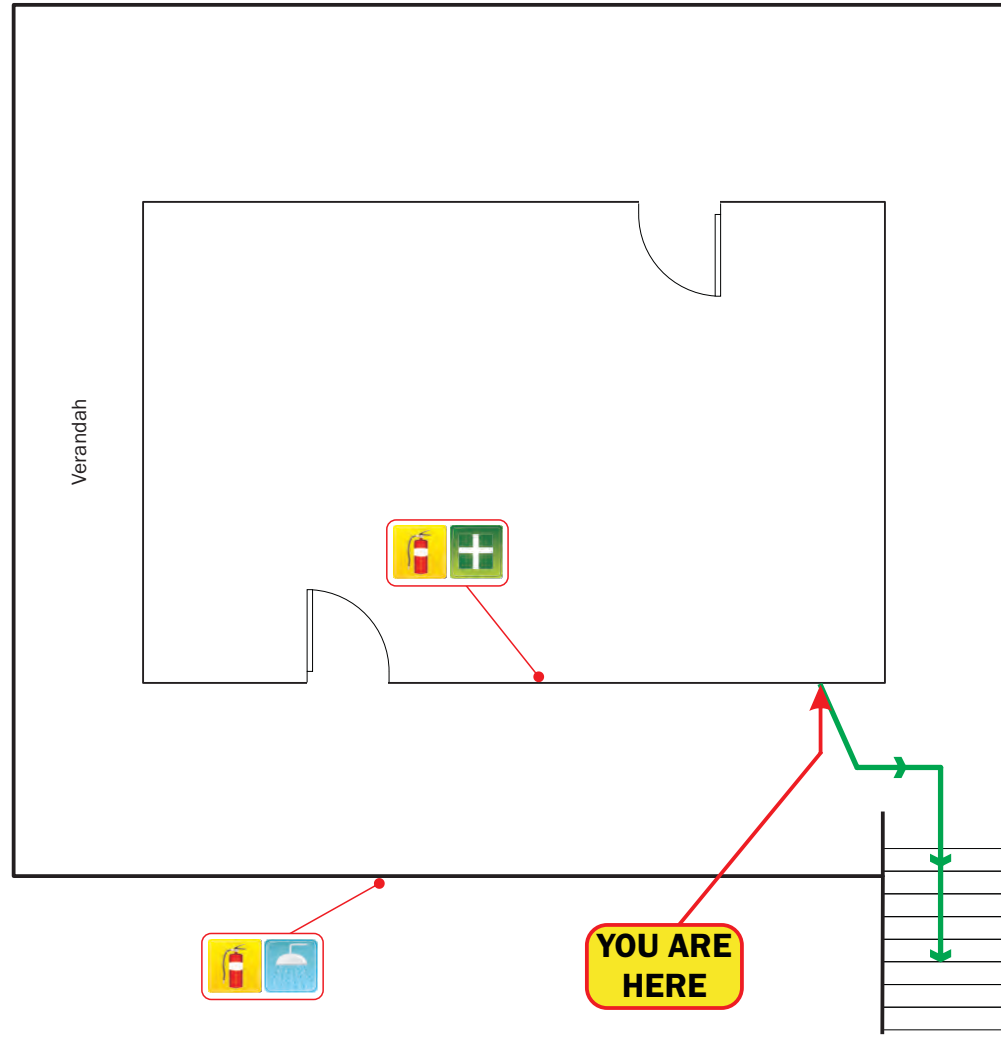
STAGE 3 - COMPLETE EVACUATION OF THE FLOOR

Should the emergency necessitate evacuation of the affected floor, Wardens are to direct occupants to the assembly area via the emergency exits.

ASSEMBLY AREA



KANGAROO AVENUE



SPOTTERS STATION 2

WORKSHOP BUILDING - DIAL-A-DUMP, HONEYCOMBE DRIVE, EASTERN CREEK, NSW 2766



DRY CHEMICAL POWDER
FIRE EXTINGUISHER



FIRST
AID KIT



EMERGENCY
SHOWER



ASSEMBLY
AREA



MUSTER
POINT



EMERGENCY
EXIT



EXIT
ROUTE

EVACUATION DIAGRAM

first 5 minutes

Experience makes all the difference.



Phone: 1300 321 120
Website: first5minutes.com.au

Issue Date: 13 June 2016

(Valid for a period of 5 years)

Diagrams used on this sign are NOT to scale.

RESPONSE TO AN EMERGENCY

R.A.C.E

Whilst emergencies differ, the RACE procedure offers a set of immediate, generic responses which are easily memorised and appropriate in most circumstances. They are:

- R REMOVE** If safe to do so, remove or rescue any persons in immediate danger.
- A ALERT** Notify appropriate personnel or combating authority. This usually involves calling the Emergency Number and operating the nearest fire alarm.
- C CONTAIN / CONTROL** Close doors, and if safe to do so, deal with the threat.
- E EVACUATE / EXTINGUISH** Remove all other persons from danger. Evacuate to the Assembly Area and remain there until advised otherwise by the Chief Warden.



STAGES OF EVACUATION

Evacuation should be conducted in three distinct stages depending on the severity of the incident.

STAGE 1 - REMOVAL OF PERSONS FROM THE IMMEDIATE DANGER AREA

Occupants are removed from the affected compartment into the next compartment, eg from a room into a corridor. Doors should be closed to confine smoke and fire in the affected compartment.

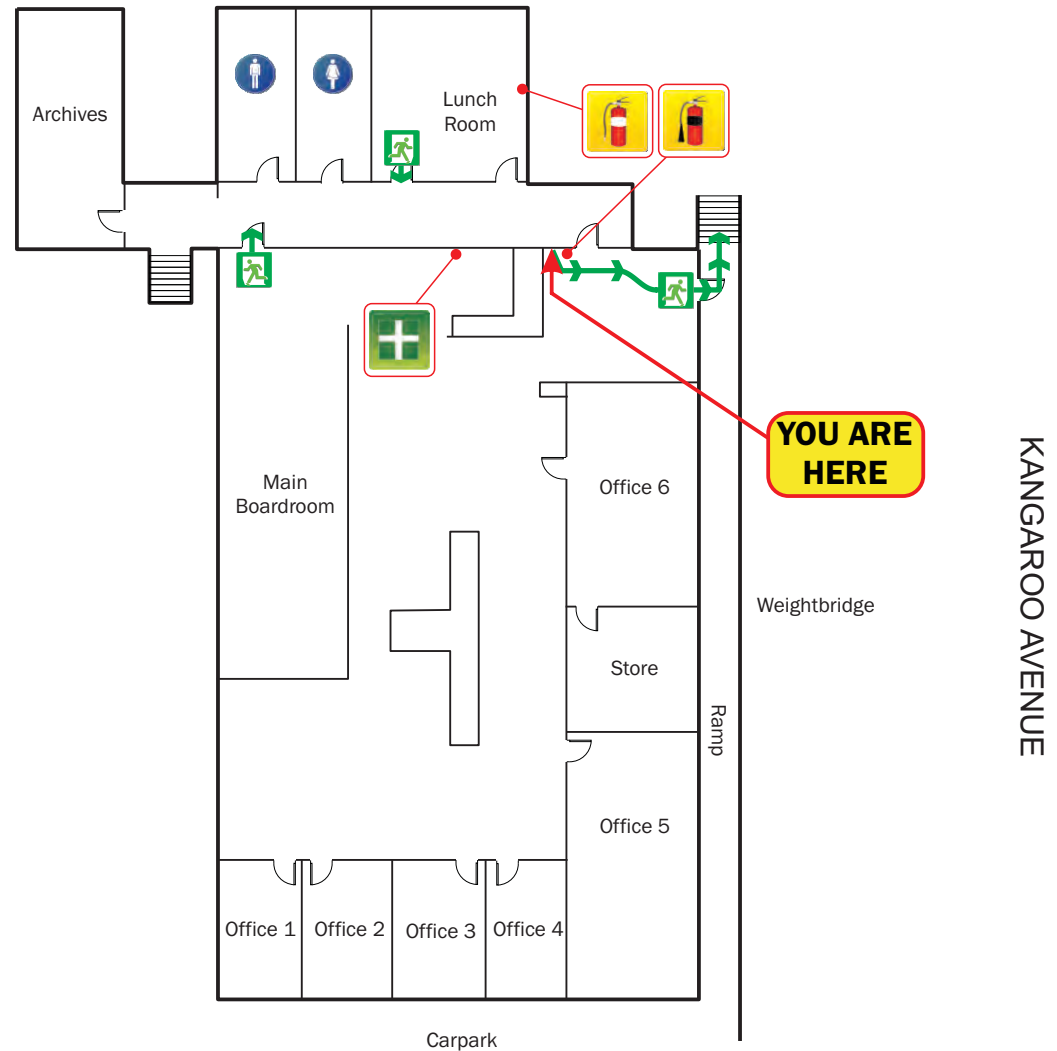
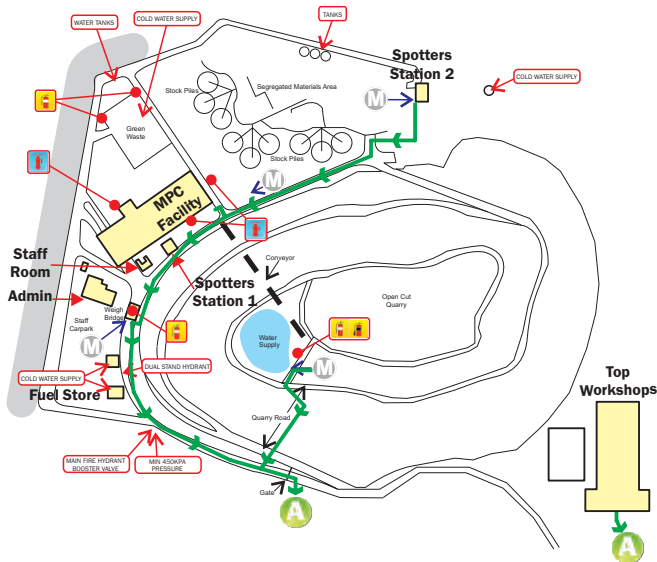
STAGE 2 - REMOVAL TO A SAFE AREA

If the severity of smoke or heat warrants further evacuation, occupants and visitors should be moved to safe areas on the same level.

STAGE 3 - COMPLETE EVACUATION OF THE FLOOR

Should the emergency necessitate evacuation of the affected floor, Wardens are to direct occupants to the assembly area via the emergency exits.

ASSEMBLY AREA



ADMINISTRATION BUILDING

WORKSHOP BUILDING - DIAL-A-DUMP, HONEYCOMBE DRIVE, EASTERN CREEK, NSW 2766



FEMALE TOILET



MALE TOILET



DRY CHEMICAL POWDER FIRE EXTINGUISHER



CARBON DIOXIDE FIRE EXTINGUISHER



FIRST AID KIT



ASSEMBLY AREA



MUSTER POINT



EMERGENCY EXIT



EXIT ROUTE

EVACUATION DIAGRAM

first 5 minutes
Experience makes all the difference.



Phone: 1300 321 120
Website: first5minutes.com.au

Issue Date: 13 June 2016
(Valid for a period of 5 years)

Diagrams used on this sign are NOT to scale.

RESPONSE TO AN EMERGENCY

R.A.C.E

Whilst emergencies differ, the RACE procedure offers a set of immediate, generic responses which are easily memorised and appropriate in most circumstances. They are:

- R REMOVE** If safe to do so, remove or rescue any persons in immediate danger.
- A ALERT** Notify appropriate personnel or combating authority. This usually involves calling the Emergency Number and operating the nearest fire alarm.
- C CONTAIN / CONTROL** Close doors, and if safe to do so, deal with the threat.
- E EVACUATE / EXTINGUISH** Remove all other persons from danger. Evacuate to the Assembly Area and remain there until advised otherwise by the Chief Warden.



STAGES OF EVACUATION

Evacuation should be conducted in three distinct stages depending on the severity of the incident.

STAGE 1 - REMOVAL OF PERSONS FROM THE IMMEDIATE DANGER AREA

Occupants are removed from the affected compartment into the next compartment, eg from a room into a corridor. Doors should be closed to confine smoke and fire in the affected compartment.

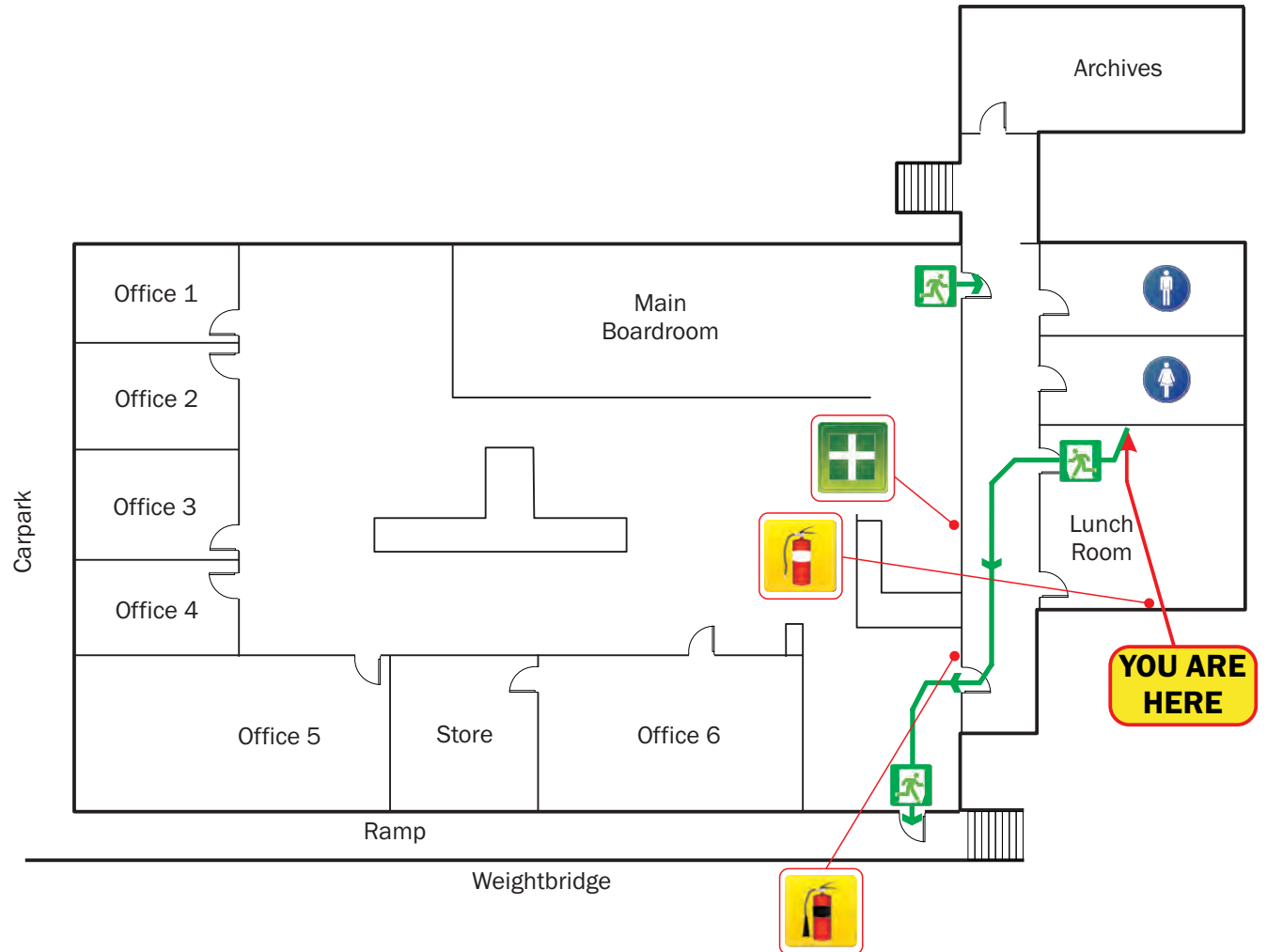
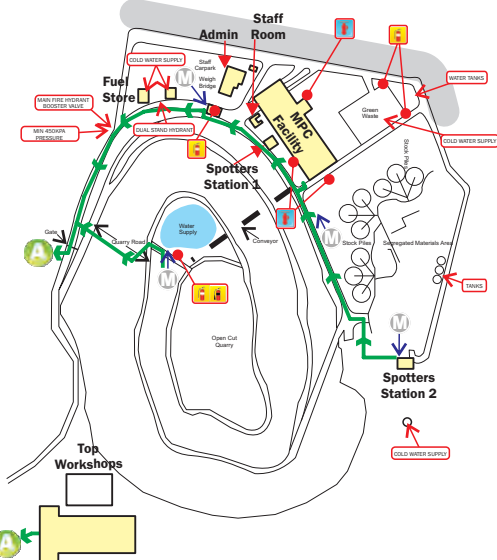
STAGE 2 - REMOVAL TO A SAFE AREA

If the severity of smoke or heat warrants further evacuation, occupants and visitors should be moved to safe areas on the same level.

STAGE 3 - COMPLETE EVACUATION OF THE FLOOR

Should the emergency necessitate evacuation of the affected floor, Wardens are to direct occupants to the assembly area via the emergency exits.

ASSEMBLY AREA



KANGAROO AVENUE

ADMINISTRATION BUILDING

WORKSHOP BUILDING - DIAL-A-DUMP, HONEYCOMBE DRIVE, EASTERN CREEK, NSW 2766



FEMALE TOILET



MALE TOILET



DRY CHEMICAL POWDER FIRE EXTINGUISHER



CARBON DIOXIDE FIRE EXTINGUISHER



FIRST AID KIT



ASSEMBLY AREA



MUSTER POINT



EMERGENCY EXIT



EXIT ROUTE

EVACUATION DIAGRAM

first 5 minutes

Experience makes all the difference.



Phone: 1300 321 120
Website: first5minutes.com.au

Issue Date: 13 June 2016

(Valid for a period of 5 years)

Diagrams used on this sign are NOT to scale.

RESPONSE TO AN EMERGENCY

R.A.C.E

Whilst emergencies differ, the RACE procedure offers a set of immediate, generic responses which are easily memorised and appropriate in most circumstances. They are:

- R REMOVE** If safe to do so, remove or rescue any persons in immediate danger.
- A ALERT** Notify appropriate personnel or combating authority. This usually involves calling the Emergency Number and operating the nearest fire alarm.
- C CONTAIN / CONTROL** Close doors, and if safe to do so, deal with the threat.
- E EVACUATE / EXTINGUISH** Remove all other persons from danger. Evacuate to the Assembly Area and remain there until advised otherwise by the Chief Warden.



STAGES OF EVACUATION

Evacuation should be conducted in three distinct stages depending on the severity of the incident.

STAGE 1 - REMOVAL OF PERSONS FROM THE IMMEDIATE DANGER AREA

Occupants are removed from the affected compartment into the next compartment, eg from a room into a corridor. Doors should be closed to confine smoke and fire in the affected compartment.

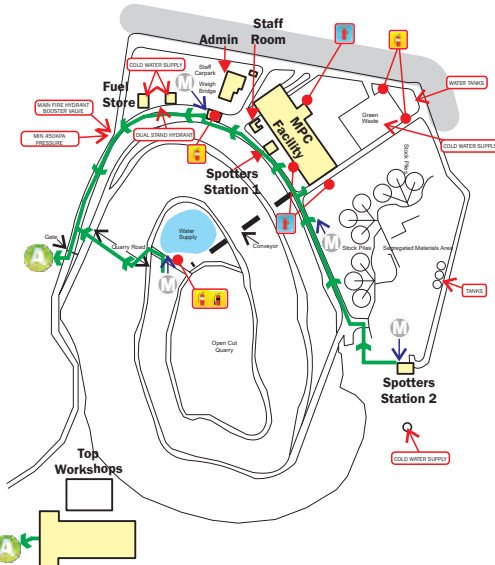
STAGE 2 - REMOVAL TO A SAFE AREA

If the severity of smoke or heat warrants further evacuation, occupants and visitors should be moved to safe areas on the same level.

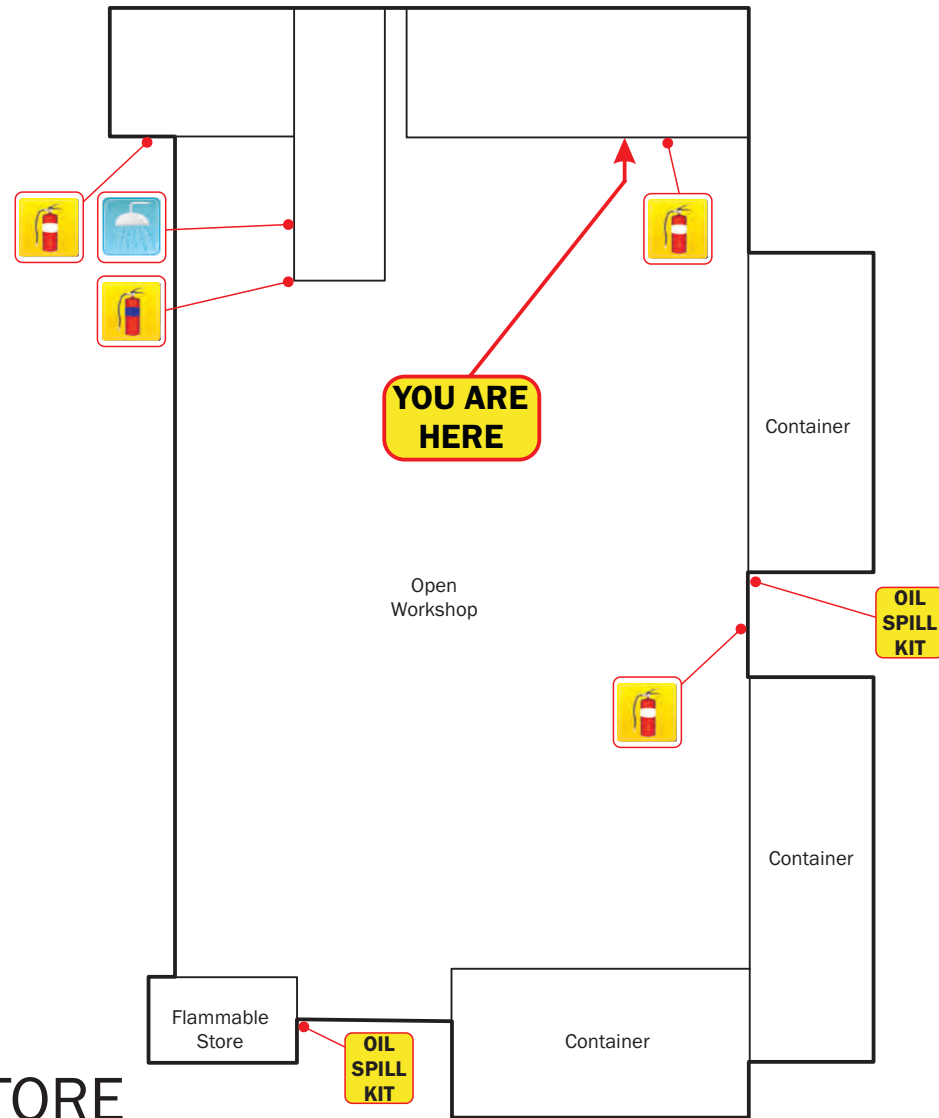
STAGE 3 - COMPLETE EVACUATION OF THE FLOOR

Should the emergency necessitate evacuation of the affected floor, Wardens are to direct occupants to the assembly area via the emergency exits.

ASSEMBLY AREA



KANGAROO AVENUE



FUEL STORE

WORKSHOP BUILDING - DIAL-A-DUMP, HONEYCOMBE DRIVE, EASTERN CREEK, NSW 2766



DRY CHEMICAL POWDER
FIRE EXTINGUISHER



EMERGENCY
SHOWER



CARBON DIOXIDE
FIRE EXTINGUISHER



ASSEMBLY
AREA



MUSTER
POINT



EMERGENCY
EXIT



EXIT
ROUTE

EVACUATION DIAGRAM

first 5 minutes
Experience makes all the difference.



Phone: 1300 321 120
Website: first5minutes.com.au

Issue Date: 13 June 2016
(Valid for a period of 5 years)

Diagrams used on this sign are NOT to scale.

RESPONSE TO AN EMERGENCY

R.A.C.E

Whilst emergencies differ, the RACE procedure offers a set of immediate, generic responses which are easily memorised and appropriate in most circumstances. They are:

- R REMOVE** If safe to do so, remove or rescue any persons in immediate danger.
- A ALERT** Notify appropriate personnel or combating authority. This usually involves calling the Emergency Number and operating the nearest fire alarm.
- C CONTAIN / CONTROL** Close doors, and if safe to do so, deal with the threat.
- E EVACUATE / EXTINGUISH** Remove all other persons from danger. Evacuate to the Assembly Area and remain there until advised otherwise by the Chief Warden.



STAGES OF EVACUATION

Evacuation should be conducted in three distinct stages depending on the severity of the incident.

STAGE 1 - REMOVAL OF PERSONS FROM THE IMMEDIATE DANGER AREA

Occupants are removed from the affected compartment into the next compartment, eg from a room into a corridor. Doors should be closed to confine smoke and fire in the affected compartment.

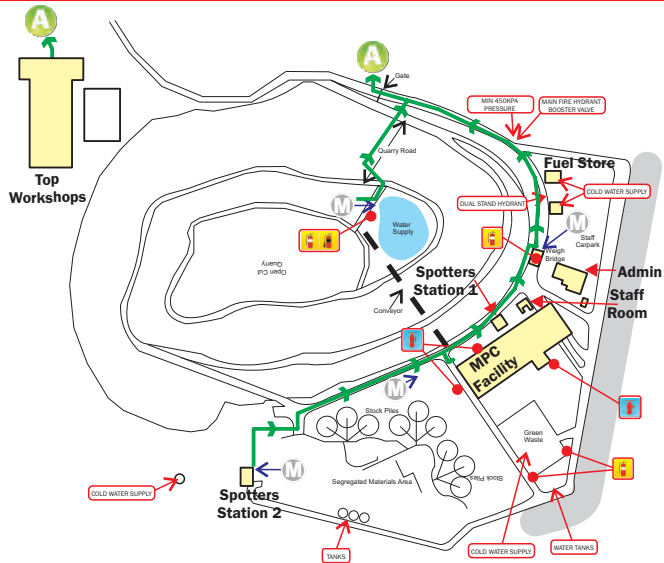
STAGE 2 - REMOVAL TO A SAFE AREA

If the severity of smoke or heat warrants further evacuation, occupants and visitors should be moved to safe areas on the same level.

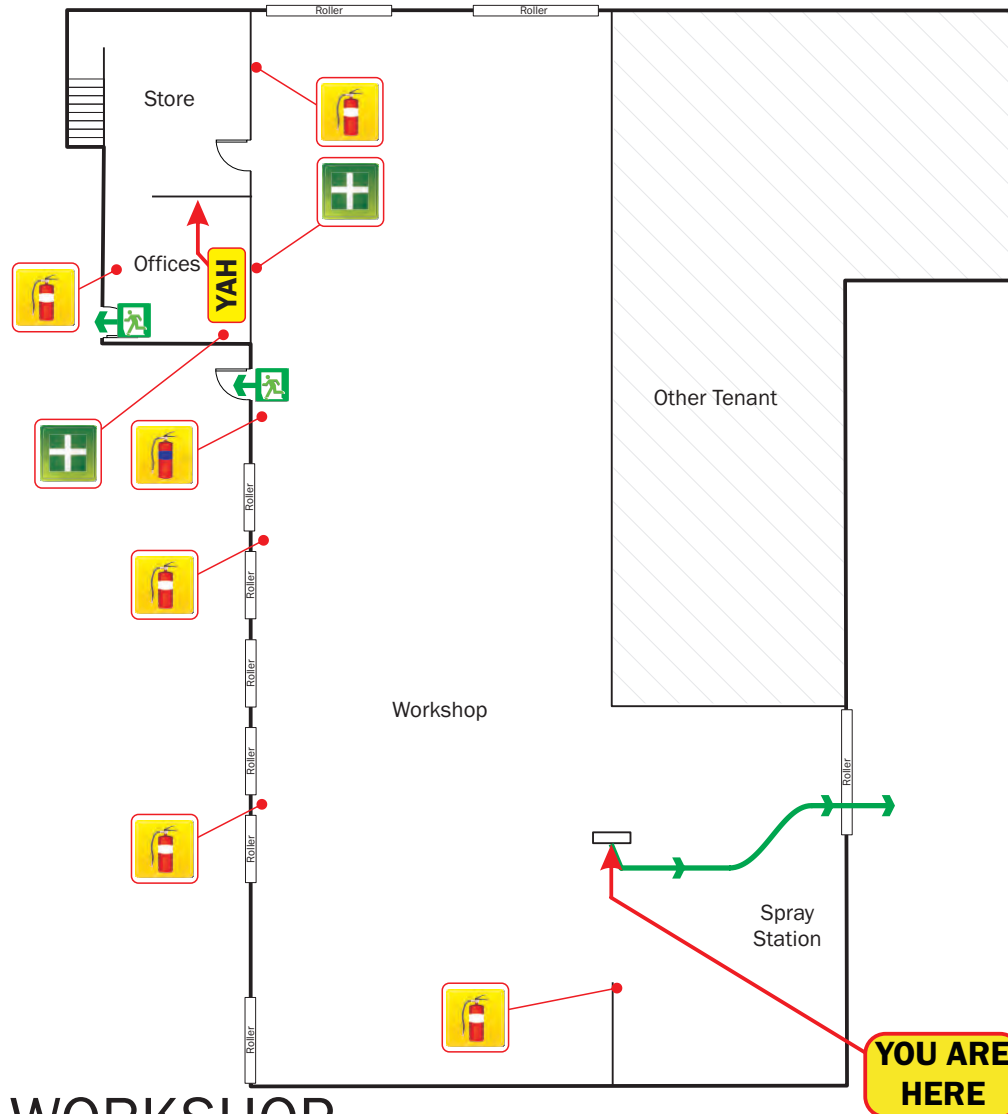
STAGE 3 - COMPLETE EVACUATION OF THE FLOOR

Should the emergency necessitate evacuation of the affected floor, Wardens are to direct occupants to the assembly area via the emergency exits.

ASSEMBLY AREA



KANGAROO AVENUE



TOP WORKSHOP

WORKSHOP BUILDING - DIAL-A-DUMP, HONEYCOMBE DRIVE, EASTERN CREEK, NSW 2766



FIRST AID KIT



DRY CHEMICAL POWDER FIRE EXTINGUISHER



FOAM FIRE EXTINGUISHER



ASSEMBLY AREA



MUSTER POINT



EMERGENCY EXIT



EXIT ROUTE

EVACUATION DIAGRAM

first 5 minutes
Experience makes all the difference.



Phone: 1300 321 120
Website: first5minutes.com.au

Issue Date: 13 June 2016
(Valid for a period of 5 years)

Diagrams used on this sign are NOT to scale.

RESPONSE TO AN EMERGENCY

R.A.C.E

Whilst emergencies differ, the RACE procedure offers a set of immediate, generic responses which are easily memorised and appropriate in most circumstances. They are:

- R REMOVE** If safe to do so, remove or rescue any persons in immediate danger.
- A ALERT** Notify appropriate personnel or combating authority. This usually involves calling the Emergency Number and operating the nearest fire alarm.
- C CONTAIN / CONTROL** Close doors, and if safe to do so, deal with the threat.
- E EVACUATE / EXTINGUISH** Remove all other persons from danger. Evacuate to the Assembly Area and remain there until advised otherwise by the Chief Warden.



STAGES OF EVACUATION

Evacuation should be conducted in three distinct stages depending on the severity of the incident.

STAGE 1 - REMOVAL OF PERSONS FROM THE IMMEDIATE DANGER AREA

Occupants are removed from the affected compartment into the next compartment, eg from a room into a corridor. Doors should be closed to confine smoke and fire in the affected compartment.

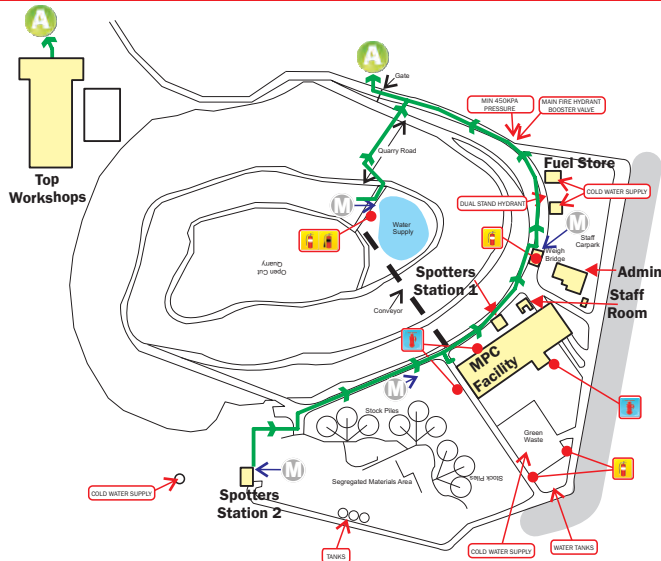
STAGE 2 - REMOVAL TO A SAFE AREA

If the severity of smoke or heat warrants further evacuation, occupants and visitors should be moved to safe areas on the same level.

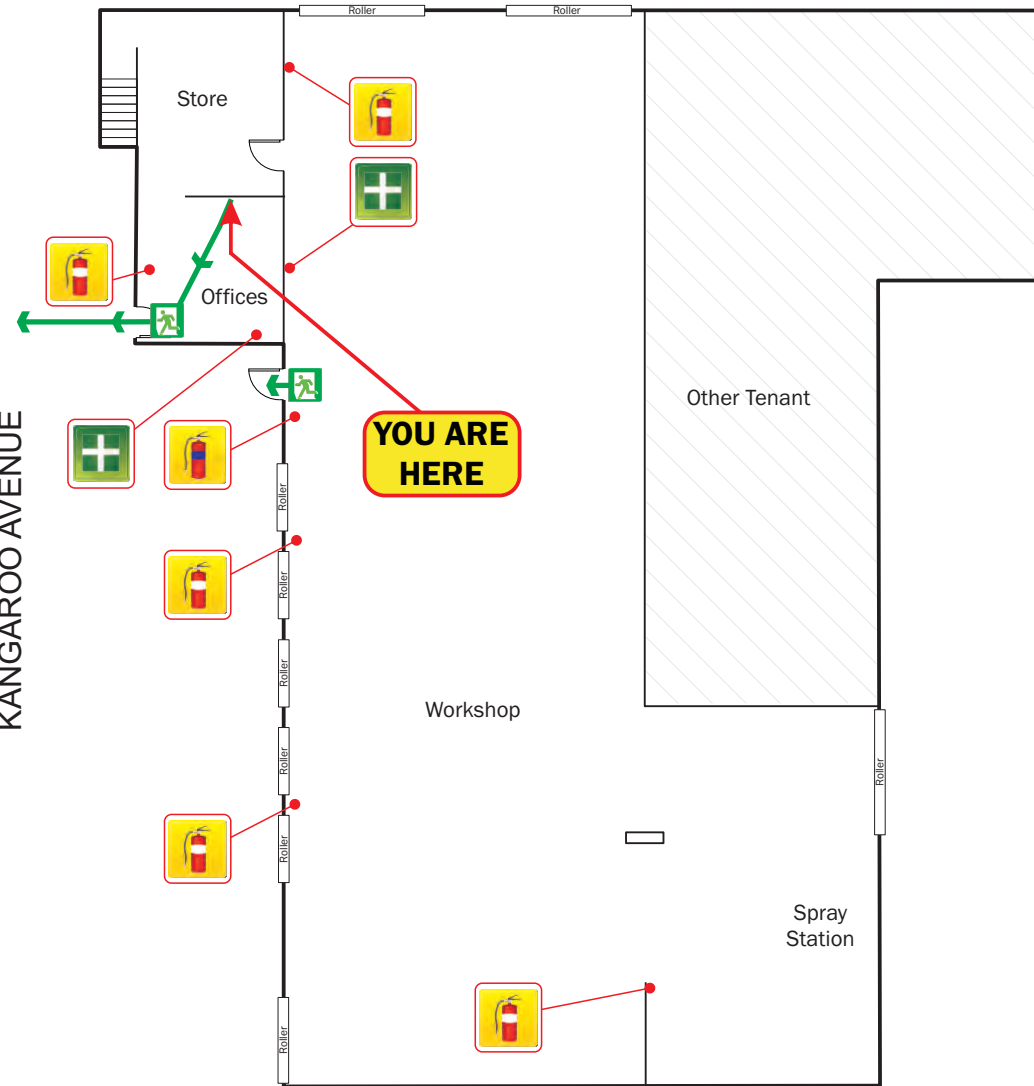
STAGE 3 - COMPLETE EVACUATION OF THE FLOOR

Should the emergency necessitate evacuation of the affected floor, Wardens are to direct occupants to the assembly area via the emergency exits.

ASSEMBLY AREA



KANGAROO AVENUE



TOP WORKSHOP

WORKSHOP BUILDING - DIAL-A-DUMP, HONEYCOMBE DRIVE, EASTERN CREEK, NSW 2766



FIRST AID KIT



DRY CHEMICAL POWDER FIRE EXTINGUISHER



FOAM FIRE EXTINGUISHER



ASSEMBLY AREA



MUSTER POINT



EMERGENCY EXIT



EXIT ROUTE